



Spaciotempo®

# Be there for the padel revolution with Spaciotempo

Introducing our all-weather protection,  
full-turnkey padel buildings & covered canopies

## What's all the fuss about?

Padel tennis originated in Mexico in 1969, created by Enrique Corcuera, and the story of how the idea was born is as captivating as the game itself. It quickly gained popularity in Spain and Latin America before spreading worldwide. Combining elements of tennis and squash, it is played on a smaller, enclosed court with walls, making it accessible and fast-paced.

In recent years, padel has seen a surge in popularity in the UK, with the Lawn Tennis Association (LTA) officially recognising it as a competitive sport. This endorsement has fuelled investment in new courts and clubs, drawing players of all ages and skill levels, and cementing padel as one of the fastest-growing sports in the country.

## Benefits and features of our padel tennis courts

### Endless Adaptations

Our cladded walling offers 1-, 2-, 3 sided or fully enclosed configurations, seamlessly integrating with existing facilities or standalone setups.

### Full Turnkey Solutions

Our products provide a complete padel court solution alongside strength and flexibility. Be it drainage, lighting, nets, and artificial grass to get you game ready.

### Signature Products

Choose the classic A-frame of Neivalu or the stylish curved roof of Oxygen for a high-quality, safe, and striking padel cover.

### All Weather Protection

Our enclosed buildings or canopies ensure all-weather play, while energy-efficient lighting enables participation into the evening.

### Built to your Requirements

We provide standalone or multi-court padel setups with changing rooms, showers, and offices for a complete turnkey solution.

### Unmatched Flexibility

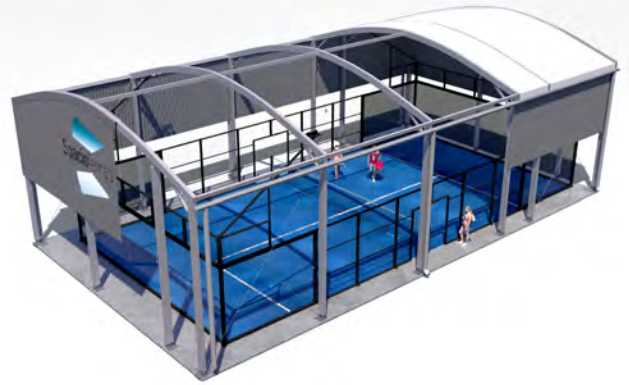
Courts can be extended, adapted, or relocated as needs evolve. Our buildings are temporary due to their agility, not because they don't last.

For expert advice, get in touch and we'll do the rest: [www.spaciotempo.co.uk](http://www.spaciotempo.co.uk) | 01889 569 569

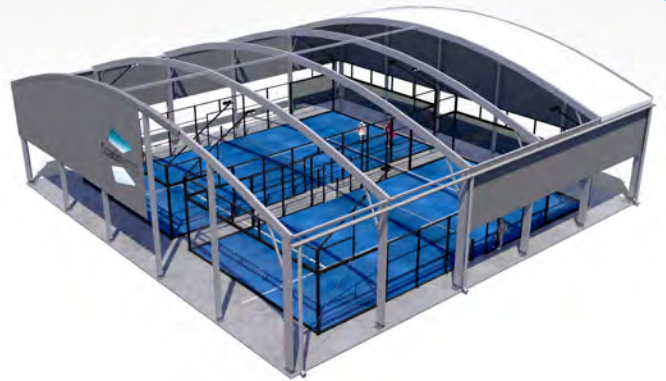


# Possible configurations

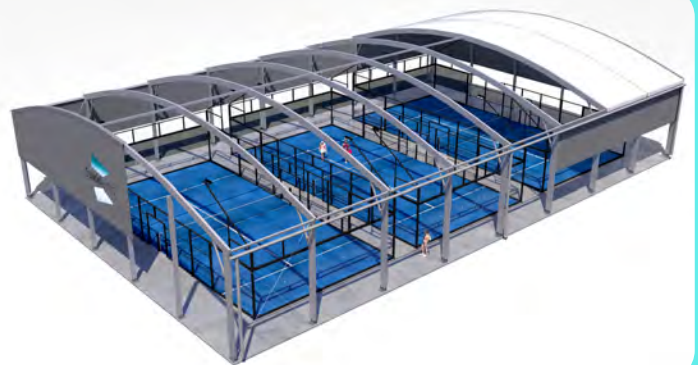
A 12m x 22m x 6m 1 court setup with Spaciotempo weather protection canopy running with the ridge line.



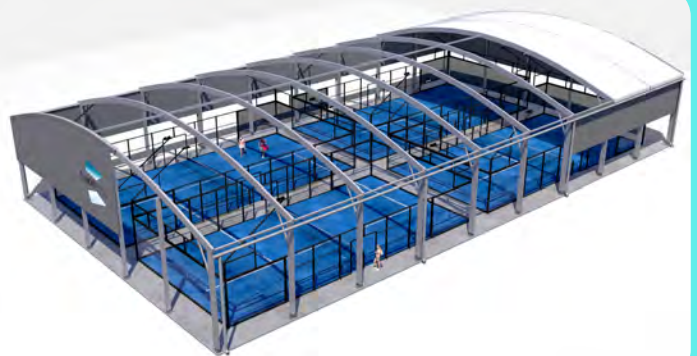
A 25m x 25m x 6m 2 court setup with Spaciotempo weather protection canopy running with the ridge line.



A 25m x 40m x 6m 3 court setup with Spaciotempo weather protection canopy in a side-by-side configuration.



A 25m x 45m x 6m 4 court setup with Spaciotempo weather protection canopy in a 2x2 configuration.



Images are for illustrative purposes only and specification can vary based on your requirements.

For expert advice, get in touch and we'll do the rest: [www.spaciotempo.co.uk](http://www.spaciotempo.co.uk) | 01889 569 569





# Why invest in a padel tennis court?

## Increased Participation

Adding more court space demonstrates a forward-thinking approach to a sport that shows no signs of slowing down in popularity. Investing now enables greater participation, accommodating more players, hosting tournaments, and expanding coaching opportunities. Padel's growing popularity ensures a steady flow of new and returning players which means they'll choose your facilities over competitors.

## Consistent Revenue Stream

With padel recognised as one of the fastest-growing sports globally, a semi-permanent court provides a reliable way to capitalise on this trend. With our buildings lasting 25+ years, it creates a consistent source of income for years to come.

## Cost-Effective Solution

Instant padel courts are significantly more affordable to install than you might think, and certainly less than traditional brick-and-mortar buildings typically around one-third of the cost-making them an excellent option for padel clubs and organisations looking to expand without breaking the bank.

## Minimal Groundworks

Eradicate the need for traditional groundworks with our surface mounted buildings and raised platform padel courts and save precious time and money in the process.

## Flexibility for Growth

Spaciotempo's courts are designed with adaptability in mind. Our bolt anchor system and lifting techniques allow you to add more courts or facilities with ease, including the addition of changing rooms, showers, or even offices, as your needs evolve. If required, the courts can also be easily relocated elsewhere on-site, giving you unmatched flexibility.

## Rapid Installation

Downtime is a concern for any sports facility, which is why we prioritise speed and efficiency. Depending on spec, our experienced in-house teams could install your new padel tennis structure within days, ensuring minimal disruption and allowing play to resume quickly.

# Why invest in Spaciotempo?

## SAPCA Approved

We recently obtained our SAPCA (Sports and Play Construction Association) membership. The LTA (Lawn Tennis Association) recommends construction companies who are affiliated with SAPCA when it comes to building padel courts.

## Industry Experience

A proven track record of working with professional and amateur sports clubs, as well as education authorities from schools to universities and leisure clubs such as gyms. With Spaciotempo, you're in the safest of hands.

## Exceptional Quality

Robust yet flexible structures can co-exist in harmony. Our frames are manufactured using anodised aluminium profiles and galvanised steel fixings giving you the confidence to make them a permanent fixture at your club.

## Flawless Credit Rating

Spaciotempo are the only semi-permanent building supplier in the UK to hold an Experian credit rating of 'Excellent', meaning we are financially secure and a company you can trust.

## No Challenge Too Big

Unlike others, we'll never shy away from a complex project and have completed some of the most innovative sporting structure installations in the UK. Equally, we will install the smallest of buildings too, and treat each with the same level of care and quality.





# Padel tennis court FAQ's

We're sure you've still got questions. Check out our carefully selected FAQ's below to help get your padel tennis court journey underway.

## CAN YOUR PADEL COURTS BE USED INDOORS AND OUTDOORS?

Yes, Spaciotempo's permanent solution padel courts are crafted for maximum versatility. Walling is optional for every 5-metre bay increment, allowing for fully enclosed buildings or roof only canopies. We also supply energy efficient lighting and HVAC packages to allow play to continue at night, and in soaring or freezing external temperatures.

## DO YOUR PADEL COURTS REQUIRE PLANNING PERMISSION?

Official guidelines from the LTA state "construction of a padel court, whether totally new on a green field site, or over an existing tennis court constitutes development and therefore requires formal planning consent to be issued by the relevant Local Authority." As a general rule, planning permission is required on all structures if the building will be in use beyond 28 days and the floor space is more than 100m<sup>2</sup>. Whilst our team can guide you through the process to help support your application, you can read our comprehensive guides [here](#).

## HOW LONG DOES IT TAKE TO SET UP A PADEL COURT?

The setup time for a padel structure from Spaciotempo depends on the project scope and site conditions but typically ranges from a few days to a couple of weeks. For example, a standard canopy without walling can cover an existing court in just a few days, whilst a project with more complex customisation, such as the laying of artificial grass, can take a few weeks.

## CAN YOUR PADEL COURTS BE CUSTOMISED WITH BRANDING?

Absolutely, we're experts at promoting your organisation and will listen, collaborate and implement your exact requirements. Be it your sports club crest or sponsorship, branding can be applied externally to our roof covers and walling and we can also install the structure in non-standard colours to tie in with your brand kit. Internally, our partners will match anything you require down to the nets, walkways and court structure.

## ARE INSTANT PADEL COURTS SUITABLE FOR PROFESSIONAL TOURNAMENTS?

Yes, padel tennis is endorsed by the LTA, the governing body of tennis in Great Britain, and our padel tennis structures meet the required standards. In fact, they actively endorse SAPCA affiliates like ourselves. We have the expertise to meet all the criteria to deliver an end-to-end construction programme and enable your organisation to create new courts quickly and host tournaments.

[FIND OUT MORE ABOUT PADEL COURTS](#)

